

BOTTOM DOORSEAL FITTING INSTRUCTIONS

Protecting People, Property & Planet



Introduction

This document provides guidance to installers on how to install the FrameFit Bottom Door Seal to reduce and remove gaps in non-compliant fire doors.

The seals remediate both FD30 and FD60 Fire Doors and have a built-in Smoke Seal. Please note, only use the LM FrameFit variant for the Bottom Door Seal.



1 Measure gap at bottom of the door

With the Fire Door closed carefully measure the gap at the base/bottom of the door with an accurate measuring device. Please ensure you measure both the ends and the middle of the door. Ensure you record all measurements for future reference.

2 Measure the gap when open

With the Fire Door now open please repeat step one, again, carefully recording the results. This is to ensure the consistency of the measurements with the door open and closed avoiding issues with future operation.



3 Measure width of the door

Measure the door width with an accurate measuring device and record the dimensions.

BOTTOM DOORSEAL FITTING INSTRUCTIONS

Protecting People, Property & Planet



4 Calculate the required length

Remove the appropriate Bottom Door Seal, either FD30 or FD60, from the packaging and measure the required length.

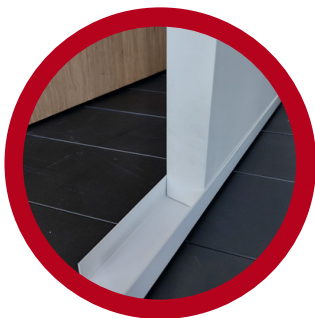


5 Cut the bottom door edge channel to required length

Cut the Bottom Door Seal to the required length with a sharp cutting device ensuring safe operation.

6 Calculate the combination of FrameFit required using reference table below

Calculate the required amount of FrameFit required, either FD30 or FD60, to restore the gap to with 8mm tolerance. Please see the table below for reference.



7 Cut to length of channel

Place the FrameFit into the Bottom Door Seal and cut to the required length ensuring a flush finish at both ends.

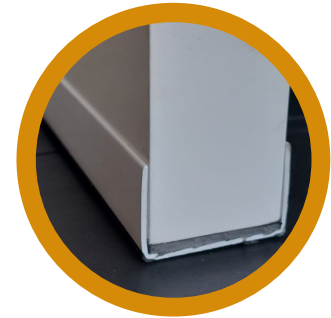
BOTTOM DOORSEAL FITTING INSTRUCTIONS

Protecting People, Property & Planet



8 Adhere FrameFit into the Bottom Door Seal

Remove the backing tape from the FrameFit and adhere to the Bottom Door Channel. Repeat for all require FrameFit lengths.

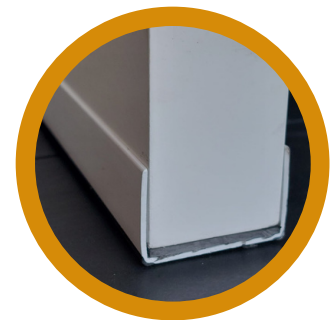


9 Prepare the Bottom Door Seal for fixing to the Door Base

Pre-drill three holes into Bottom Door Seal and FrameFit 25mm from each end and in the middle in preparation for attaching to the fire door base.

10 Screw Bottom Door Seal to door base

Remove the fire door from the frame and safely secure the door so that you have full access to the door base. Using M5 wood screws, that are 15-20mm larger than the gap you wish to fill, screw the Bottom Door Seal onto the door base ensuring that the Bottom Door Seal is flush to the door at both ends.



11 Re-hang the door

Re-hang the door.

BOTTOM DOORSEAL FITTING INSTRUCTIONS

Protecting People, Property & Planet



12 Check the door is fully operational

Finally check the fire door opens and closes without obstruction and that the gap has been reduced to the maximum 8mm required for an FD30 and FD60 fire and smoke door.



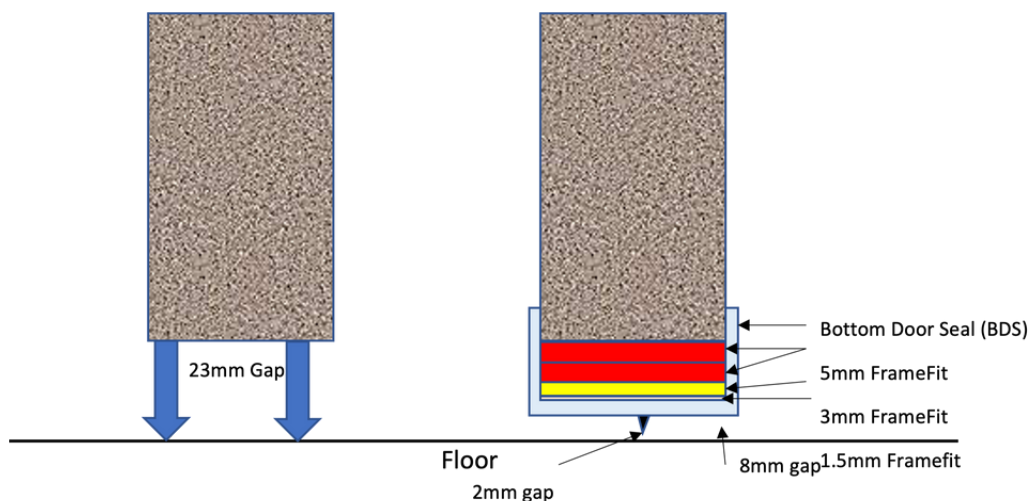
13 Capture evidence of completed works

Once your installation is complete capture the completed works on your phone or other suitable device to ensure you have an appropriate record. This can then provide a reference point for future inspections and remedial works.

Installation Example

See below FrameFit installation example.

This shows a 23mm Gap Closed to 8.5mm using 2x5mm, 1x3mm and 1x 1.5mm Framefit Adhered to the Bottom Door Seal (BDS).



BOTTOM DOORSEAL FITTING INSTRUCTIONS

Protecting People, Property & Planet



Gap Reference Table

Please use the below table as a guide to ensuring the correct amount of FrameFit is used in the Bottom Door Seal (BDS) to close the measured gaps to a maximum of 8mm. Only use the LM FrameFit variant.

Measured Gap	Door Type	Framefit Required LM only				Notes
			5mm	3mm	1.5mm	
25	Fire and Smoke	BDS	2	2		
24	Fire and Smoke	BDS	2	2		
23	Fire and Smoke	BDS	2	1	1	
22	Fire and Smoke	BDS	2	1		
21	Fire and Smoke	BDS	2		1	
20	Fire and Smoke	BDS	1	2		
19	Fire and Smoke	BDS	2			
18	Fire and Smoke	BDS	1	1	1	
17	Fire and Smoke	BDS	1	1		
16	Fire and Smoke	BDS	1		1	
15	Fire and Smoke	BDS		2		
14	Fire and Smoke	BDS	1			
13	Fire and Smoke	BDS	1			
12	Fire and Smoke	BDS		1		
11	Fire and Smoke	BDS			1	
10	Fire and Smoke	BDS			1	
9	Fire and Smoke	BDS			1	
8	Fire and Smoke	BDS Only				
7	Fire and Smoke	BDS Only				
6	Fire and Smoke	BDS Only				
5	Fire and Smoke	BDS			1	Remove BDS Flipper
4	Fire and Smoke	BDS			1	Remove BDS Flipper
3	Fire and Smoke	Nothing required				
2	Fire and Smoke	Nothing required				