

Application of FR Breather Membranes with Self-Adhesive Strips

**INSTALLATION
GUIDANCE**



FR Breather Membranes with self-adhesive strips

illbruck FR Breather Membranes are vapour permeable, airtight and watertight and are used on the exterior side of lightweight steel and timber frame systems.

This document covers the different methods of installation for breather membranes with self adhesive strips. The method selected will depend on project and site specific requirements such as anticipated wind loads, length of exposure prior to the installation of the holding brackets for the cladding/finish, building height and location.

Please note:

The membrane must always be installed in the correct orientation and overlaps sealed with the correct tape – please refer to the table below:

Product	Orientation	Tape	Reaction to Fire in accordance with EN 13501-1	Resistance to water penetration
FR Breather Membrane Black (ME014)	Smooth/glossy coated side facing outwards to external environment	ME316	Class B	Class W1
FR Breather Membrane Alu (ME050)	Shiny/reflective side facing outwards to external environment	ME355 FR sealing tape (Alu)	Class A2	Class W1

Materials required:

- illbruck TF448 High Performance Bonding Tape
- illbruck ME315 Total Protection Tape
- illbruck AT140 Primer
- Mechanical fasteners/fixing
- Low tack masking tape
- illbruck FR Window & Door Sealing Membrane (ME010)
- illbruck FR Membrane Adhesive (SP025)

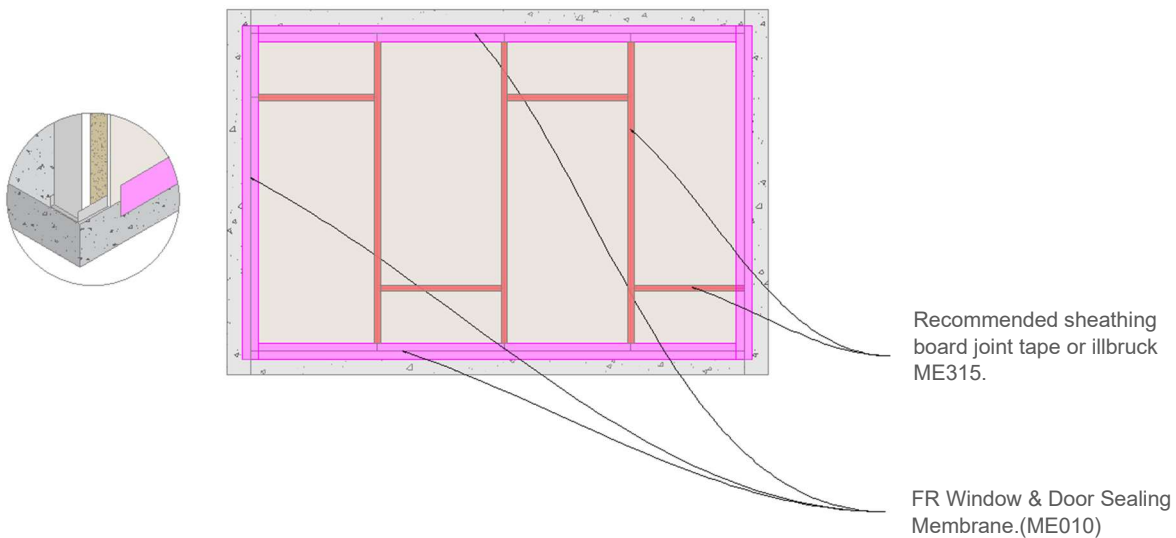
Tools and Accessories:

- Sharp retractable bladed knife and /or illbruck cutting shears
- Laser or chalk line
- 2" disposable paint brushes
- Pots for decanting AT140 Primer
- Stout seam roller
- Bench or table wide enough to accommodate the width of the membrane and long enough to accommodate the required cut lengths

Before commencing work:

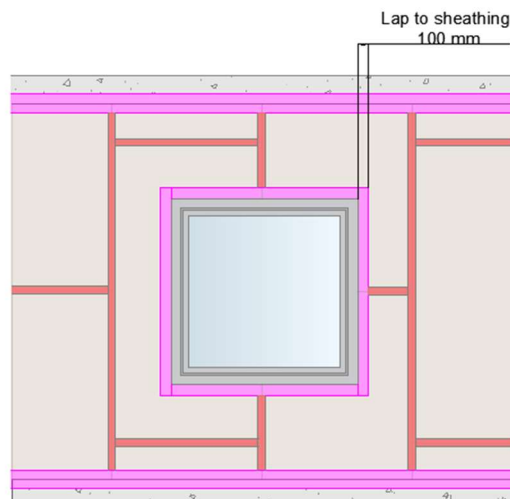
The working area must be dry and free from dust and debris. Scaffolding (if provided) should be clear of any other trades or obstructions left by others.

Ensure the sheathing board joints have been sealed in accordance with the manufacturers board joint sealing recommendations, or with illbruck ME315 Total Protection Tape.



The junctions between the sheathing boards and floor slabs or columns shall be sealed with illbruck FR Window & Door Sealing Membrane (ME010), overlapping both the structure and sheathing board by min. 100 mm and bonded in place using FR Membrane Adhesive (SP025) in strict accordance with the illbruck method statement. Dependant on the substrate type, the use of an illbruck primer may be required to provide a satisfactory bond, please consult with Tremco CPG UK for further guidance. Illbruck AT140 primer should be used on any friable concrete substrates or over silicone based sealant compounds that may have been used to seal the joints between the sheathing boards.

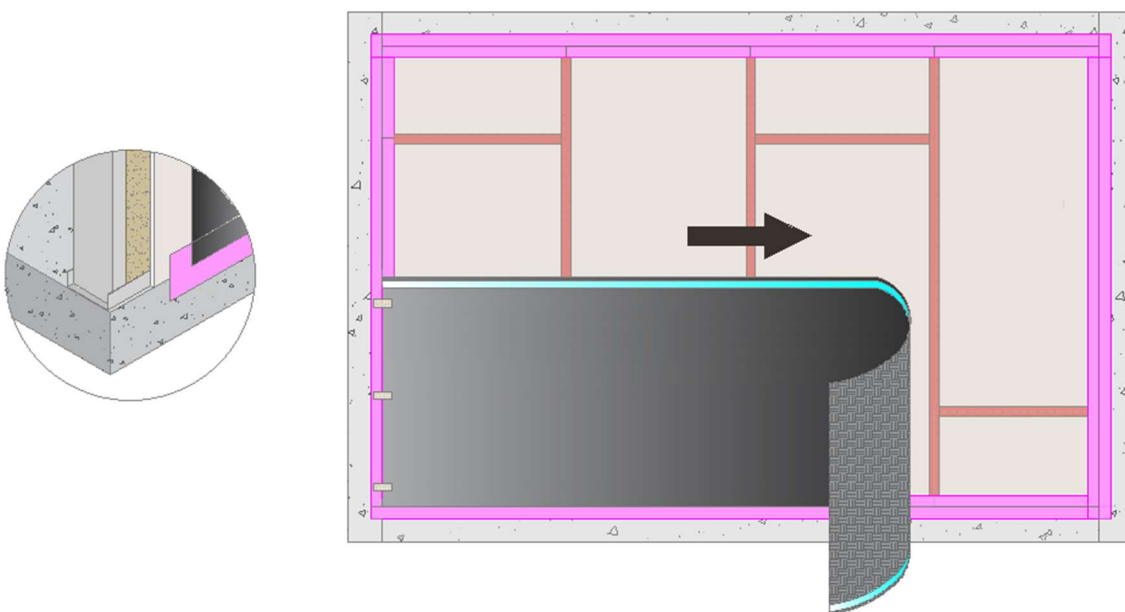
Prior to installing illbruck FR Breather Membranes all windows, doors and other openings should firstly be fully sealed with illbruck FR Window & Door Sealing Membrane (ME010), or other specified illbruck window & door membrane, with a lap of 100 mm (minimum 50 mm) back to the substrate. Please refer to separate guide 'Application of illbruck membranes using paste adhesive'.



Method 1 – suitable for low to moderate wind loads or where the cladding bracket will be installed promptly after application of the membrane.

Installing the first layer of membrane

Start at the lowest elevation, stand the log upright, with the adhesive strip on the rear of the membrane at the bottom and the adhesive strip on the outer face at the top. Place the lower loose corner on the mid point of the overlapping FR Window & Door Sealing Membrane (ME010) used to seal the foot of the sheathing board. The membrane must overlap the perimeter sealing membrane by a minimum of 100 mm.



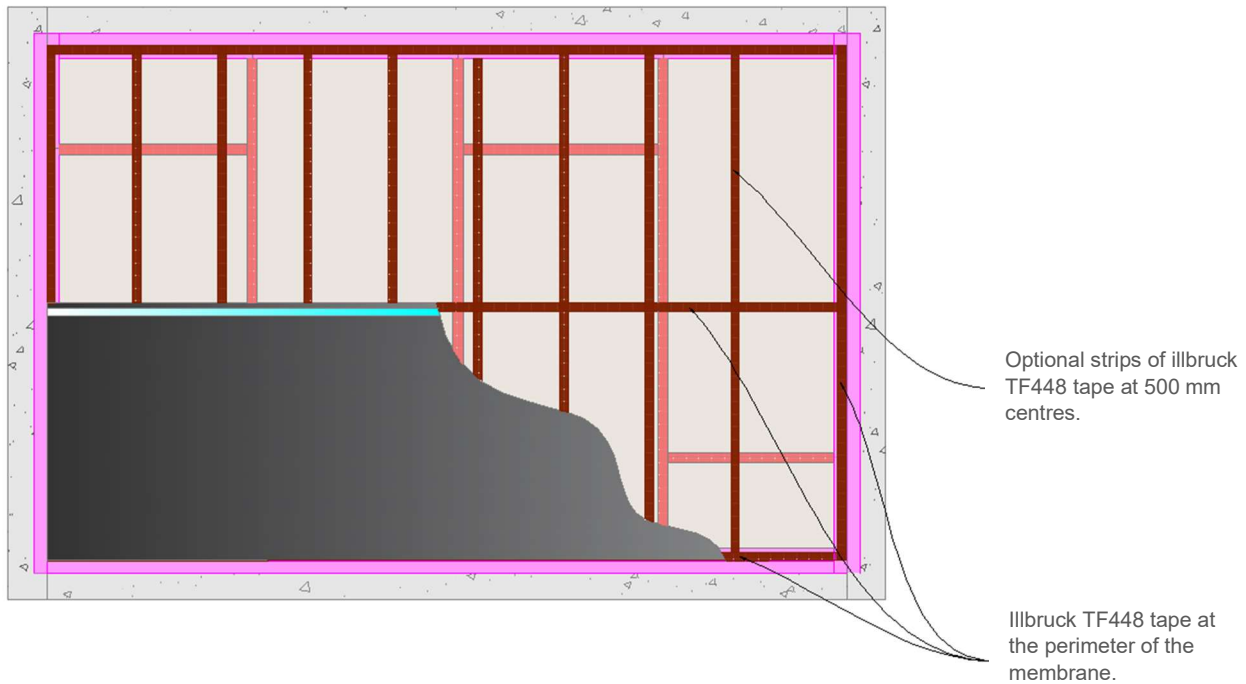
Unfurl the membrane horizontally and press the self adhesive strip on to the substrate ensuring that the membrane is applied smoothly and free from wrinkles and bubbles. Sections of masking tape can be applied on adhesive free edges if required to temporarily secure the membrane in position.

Ensure that the unfurled membrane is plumb, a laser or chalk line may be of assistance.

Consolidate the bond on the bottom edge of the membrane with a stout seam roller.

Method 2 - suitable for low, moderate or high wind loads where mechanical fastenings are not specified

The surfaces must be clean, dry and free from oil, grease, paint and other contaminants liable to impair adhesion.



For low to medium wind loads the double sided tape should be applied around the entire perimeter of the membrane. For higher wind loads, the bond can be further enhanced by installing vertical strips of TF448 High Performance Bonding Tape at 500 mm centres.

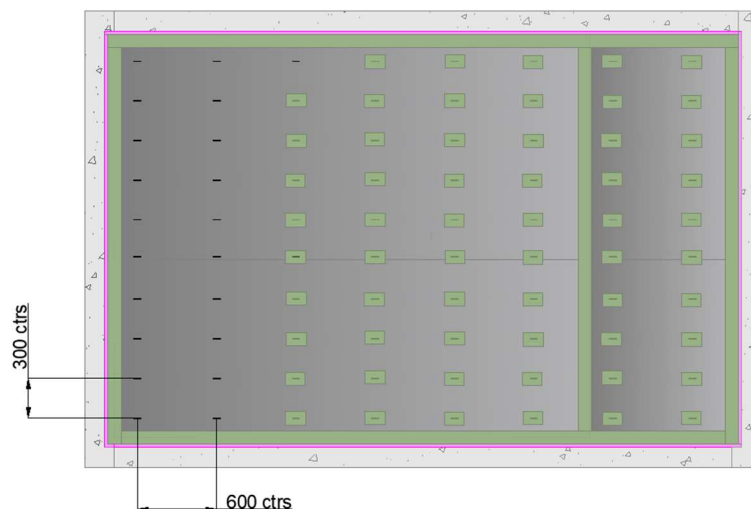
The TF448 High Performance Bonding Tape is pre-applied to the sheathing board to fix the FR breather membrane in place and provide support to the membrane during installation.

Remove the release liner and fix the TF448 High Performance Bonding Tape to the sheathing board, press down firmly to create an instant bond. The top liner can then be removed and the membrane installed. Start with the bottom left corner and unfurl the membrane horizontally ensuring the membrane is plumb and wrinkle free, carefully pressing the membrane on to the tape to bond into position.

Method 3 - suitable for high wind loads using mechanical fasteners

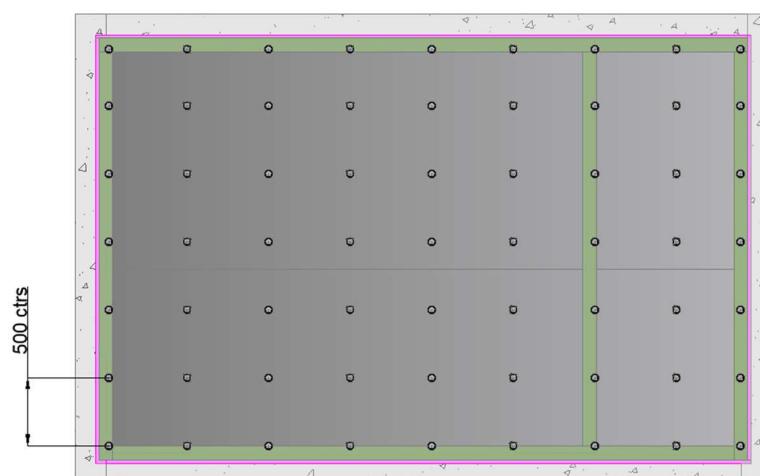
Stainless steel staples can be used as an option to provide a mechanical fix, where the substrate type is suitable to accept them (such as OSB or similar).

The staples should be installed at 600 mm centres horizontally and 300 mm centres vertically. Piercing the membrane with staples will compromise its effectiveness as an air and weather barrier, therefore the staples must be sealed with the correct illbruck tape, either in small patches as shown below, or applied in a single length covering a run of staples.



For other sheathing boards and substrates where staples are not suitable or for a more robust fixing method, stainless steel screws are installed through the sheathing board into the SFS at 500 mm centres vertically and to align with every stud.

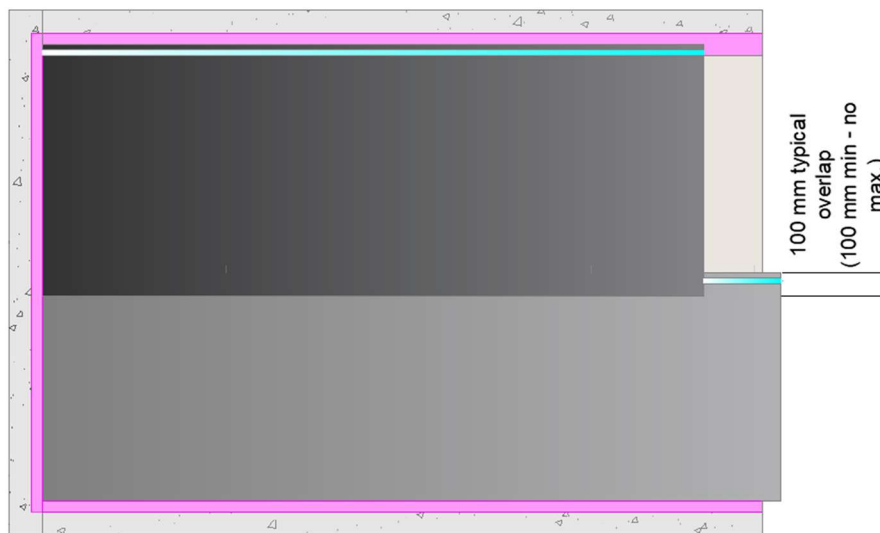
The screws should be a suitable drill-tip or self-tapping type and the screw head must sit flush with the surface (not countersunk). An EPDM /Butyl washer must be used between the screw head and membrane to avoid water ingress. Sealing the screw heads with tape is not necessary with the use of suitable washers.



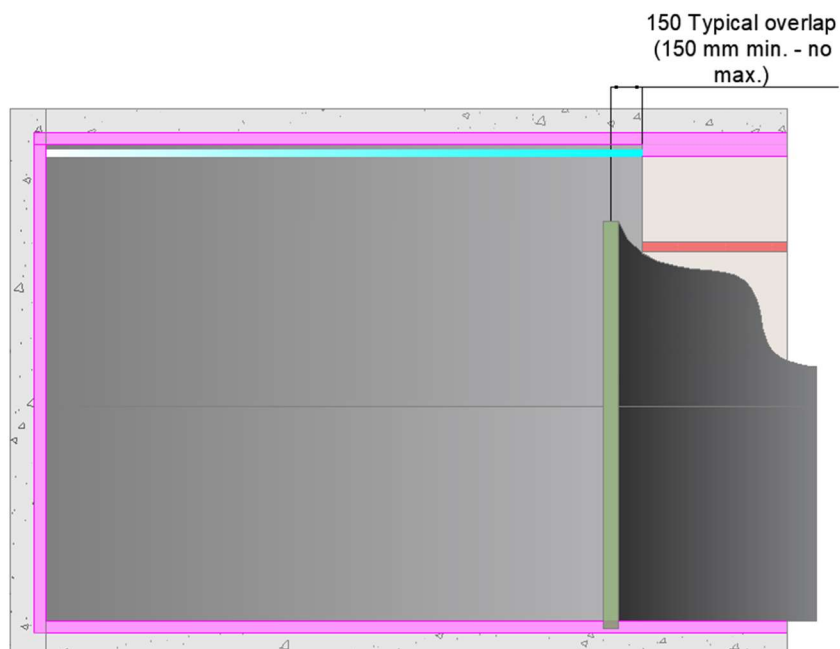
General guidance – all installation methods

Forming overlaps

All horizontal joints must be formed with a minimum 100 mm sealed overlap. For horizontal overlaps, the self-adhesive bonding strips will adequately seal the overlap. Ensure the seal is wrinkle and bubble free and consolidate with a seam roller.



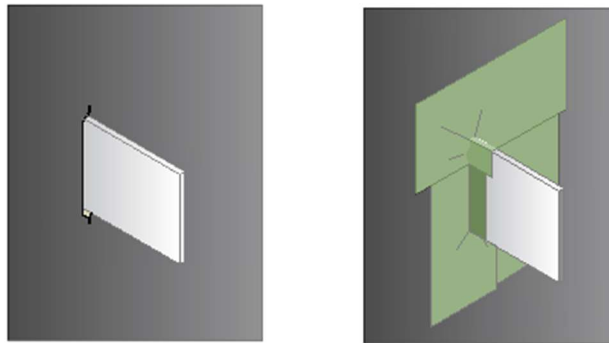
All vertical joints must be formed with a minimum 150 mm sealed overlap.



Once the joints have been formed and the membrane is temporarily secured, apply the correct illbruck tape to seal the overlap. The tape should be wrinkle and bubble free, and consolidate the bond with a seam roller.

Sealing cladding brackets and penetrations

The positions of any brackets or similar protrusions should be noted and small incisions made through the membrane with a box cutter or palette knife. Once formed the protrusion is carefully pushed through the incision.

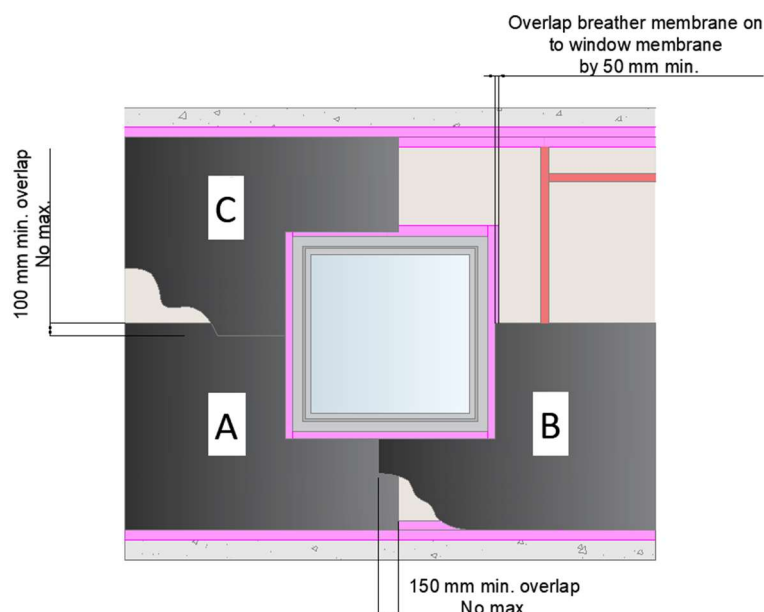


All incisions around any penetration are fully sealed with the correct illbruck tape.

Interfaces with window and door sealing membranes

Before installing the FR breather membrane all windows, doors or openings should firstly be fully sealed using a suitable and compatible illbruck solution, such as FR Window & Door Sealing Membrane (ME010).

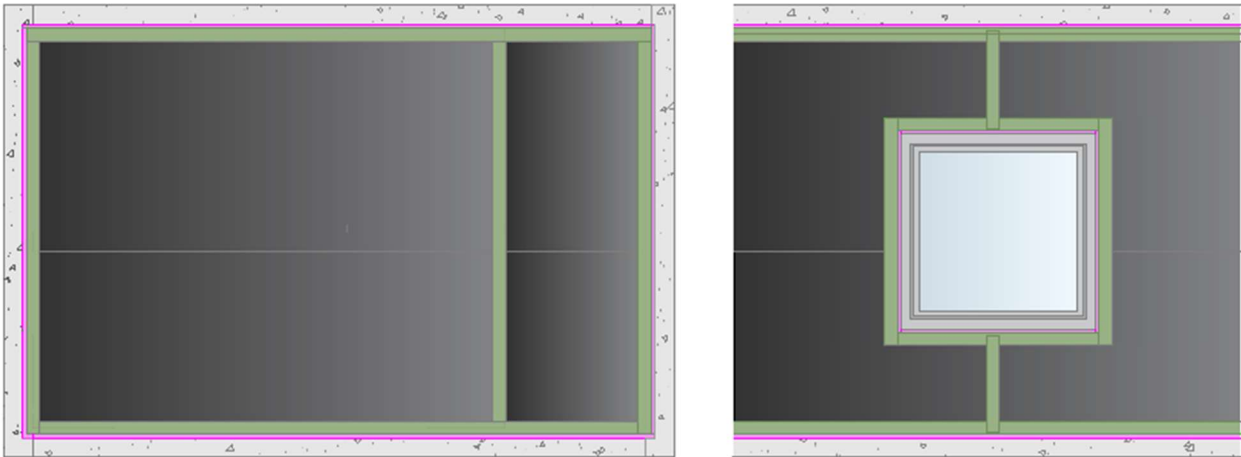
To install the FR breather membrane measure around the opening and cut the membrane to fit. The overlaps onto the FR Window & Door Sealing Membrane (ME010) around the opening is a minimum of 50 mm as shown below.



Horizontal overlaps are sealed with the self-adhesive bonding strips. Vertical overlaps are sealed with the correct illbruck tape, applied bubble and wrinkle free and all bonds are consolidated with a seam roller.

Completion

On completion of the installation, check that all overlaps have been correctly formed in accordance with this guidance document. The perimeter of the membrane and around the edges of openings must be sealed with the correct illbruck tape, forming a 50/50 lap between the membrane's edge and the substrate or window sealing membrane.



Support

Here at Tremco CPG UK Ltd, we have technical experts and field support teams who can help you – from specification to application, we're on hand.

If you're looking for more information about fire rated membranes, or how to pick the right membrane for your application, please contact our team: hello@tremcocpg.com.

Tremco CPG UK Limited,
Hindley Green, Wigan WN2 4HT
T. +44 (0) 1942 251 400
hello@tremcocpg.com
www.tremcocpg.eu

Information contained in this document conforms to the standard illbruck method of installation as of the date of publication of this document and is presented for guidance only and in good faith. Tremco CPG UK Ltd. assumes no liability, expressed or implied, as to the architecture, engineering, or workmanship of any project. To ensure that you are using the latest, most complete information, contact Tremco CPG UK Ltd.