



Safer penetrations
for fire stopping.

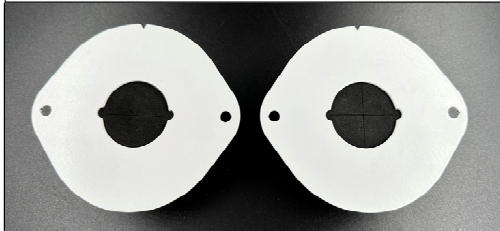
**SPEED CUTTER
INSTALLATION GUIDE**

**SC35.36C &
SC35.36P**

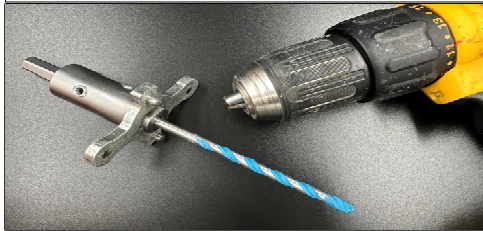
INSTALLATION

Required Products and Tools (for Two Sided Installation)

2 x SpeedCutters



Electric Drill and SC Driver



4 x 4.2mm x 25mm Screws (supplied)
(Two per SpeedCutter)



Wall Side 1

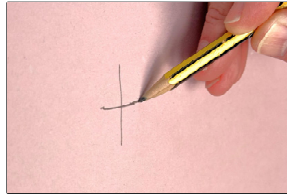
Step 1

Take usual precautions to ensure that no services or stud is situated behind the plasterboard in the proposed installation point.



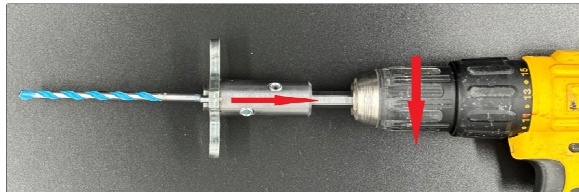
Step 2

Clearly mark Cavity Wall with a cross where centre of SpeedCutter is to be Installed



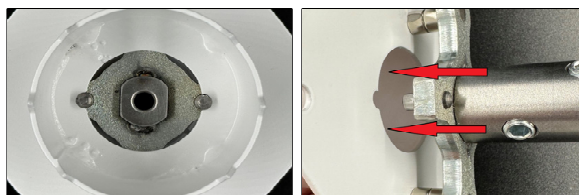
Step 3

Place SC Driver (with 15cm Drill Bit) into Electric Drill and Tighten



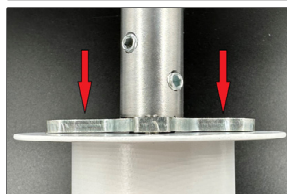
Step 4

Align Pins on SC Driver with notches on Speed Cutter and push into place.



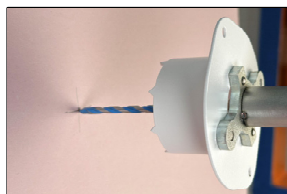
Step 5

Ensure that the SC Driver is flush with the Speed Cutter. The Magnets on the SC Driver will hold the SpeedCutter in position.



Step 6

Align SC Driver Drill Bit with cross on the Wall ensuring that the SpeedCutter is perpendicular to wall.

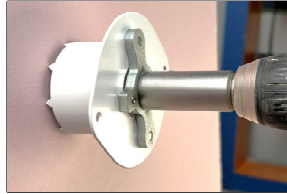


INSTALLATION Continued

Wall Side 1

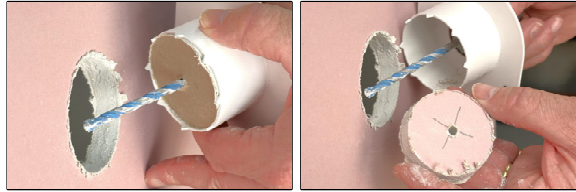
Step 7

Start Drilling slowly. Once pilot hole is made, try to ensure that teeth of the SpeedCutter cut evenly into the wall whilst drilling.



Step 8

Once the SpeedCutter has cut through the plasterboard either push the billet into the wall cavity or remove the SpeedCutter, remove billet and dispose of it.



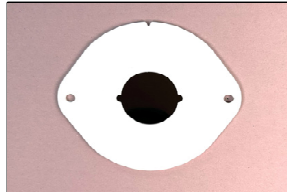
Step 9

Ensure that Drill Bit has created pilot hole on Wall Side 2 and place SpeedCutter back into hole.



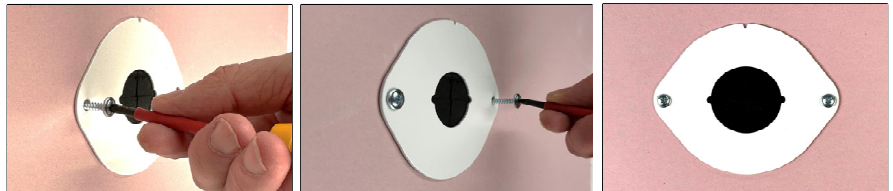
Step 10

Place the SpeedCutter back into the hole ensuring that "V" notch on the top is at 12 o'clock.



Step 11

Place a screw in each of the SpeedCutter holes and screw into plaster board being careful not to overtighten.



Wall Side 2

Step 12

Take the second SpeedCutter and repeat Steps 4 and 5.

Step 13

Insert Drill Bit in SC Driver into Pilot Hole in Wall Side 2 and repeat Steps 7 to 11 for Wall Side 2 (ignoring Step 9).

For a Single Sided Installation, complete Steps 1 to 11 but replace SC Driver Drill Bit with a 10cm Drill Bit at Step 3